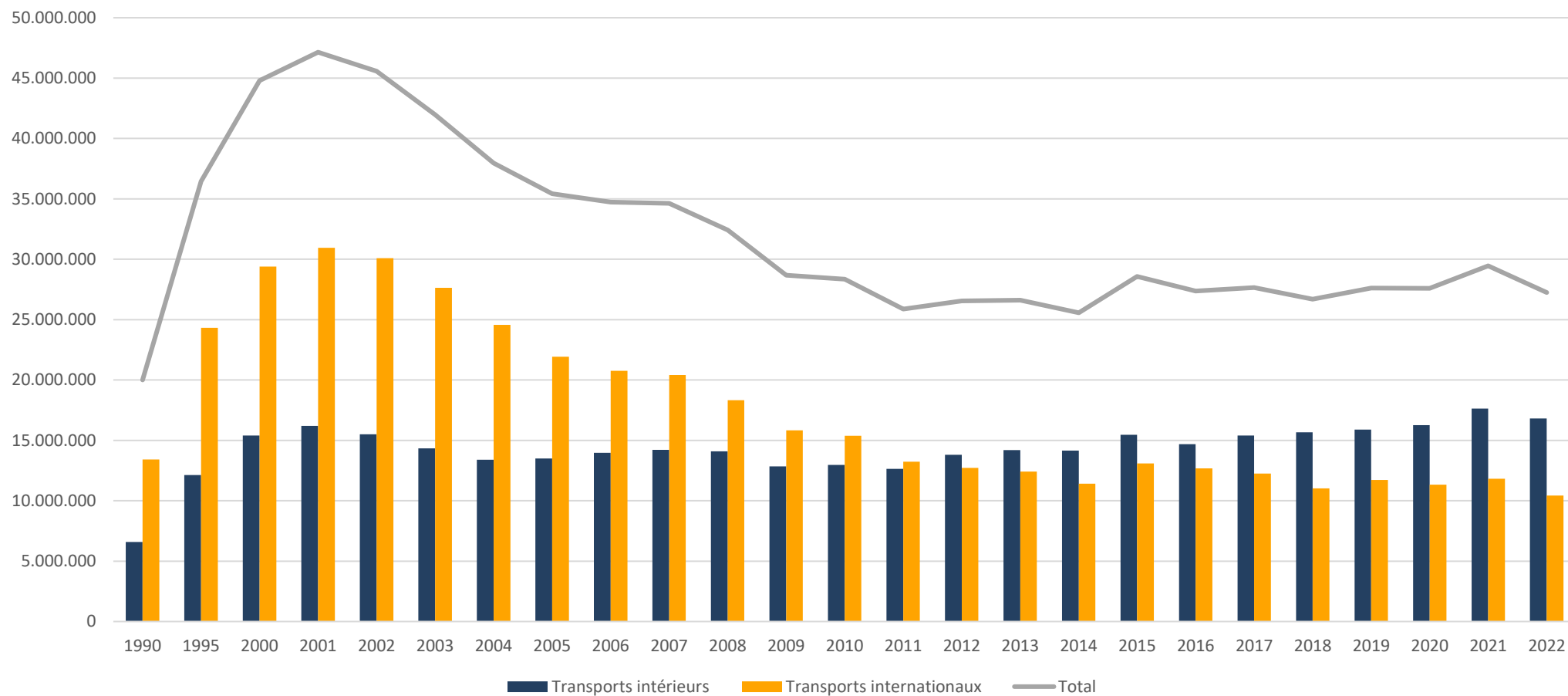


TRANSPORT NATIONAL ET INTERNATIONAL PAR DES VEHICULES BELGES POUR COMPTE DE TIERS



	Transport national		Transport international		Total
	TKM	%	TKM	%	
1990	6.594.385	32,96%	13.412.085	67,04%	20.006.470
1995	12.126.147	33,27%	24.319.101	66,73%	36.445.248
2000	15.398.078	34,38%	29.389.491	65,62%	44.787.569
2001	16.204.409	34,37%	30.941.634	65,63%	47.146.043
2002	15.497.649	34,00%	30.081.146	66,00%	45.578.795
2003	14.348.174	34,18%	27.628.699	65,82%	41.976.873
2004	13.401.599	35,30%	24.565.184	64,70%	37.966.783
2005	13.501.478	38,10%	21.934.610	61,90%	35.436.088
2006	13.966.286	40,22%	20.757.398	59,78%	34.723.684
2007	14.219.423	41,06%	20.409.398	58,94%	34.628.821
2008	14.096.527	43,47%	18.332.098	56,53%	32.428.625
2009	12.847.568	44,80%	15.832.162	55,20%	28.679.730
2010	12.974.007	45,76%	15.380.754	54,24%	28.354.761
2011	12.635.904	48,83%	13.242.325	51,17%	25.878.229
2012	13.815.706	52,05%	12.726.079	47,95%	26.541.785
2013	14.191.775	53,33%	12.420.385	46,67%	26.612.160
2014	14.155.131	55,38%	11.405.374	44,62%	25.560.505
2015	15.468.636	54,15%	13.097.172	45,85%	28.565.808
2016	14.682.498	53,66%	12.680.273	46,34%	27.362.771
2017	15.394.647	55,68%	12.254.273	44,32%	27.648.920
2018	15.673.361	58,71%	11.021.750	41,29%	26.695.111
2019	15.901.936	57,58%	11.716.076	42,42%	27.618.012
2020	16.257.748	58,92%	11.336.703	41,08%	27.594.451
2021	17.639.091	59,87%	11.821.485	40,13%	29.460.576
2022	16.812.697	61,71%	10.432.855	38,29%	27.245.552

Transports intérieurs et internationaux effectués par les véhicules belges pour compte de tiers



Source : SPF Economie - Direction générale de la statistique et de l'information économique