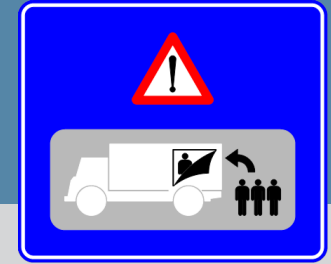


# Don't give people smuggling a chance!

## Tips for truckers



People smuggling can cause **PROBLEMS** : damage to the load, delays, destruction of food, large fines, violence, etc.

Your **COOPERATION** is important in addressing these problems.

Following these tips will increase the **SECURITY** of your vehicle.

### A GOOD START

- Lock the cargo space after loading with a lock, seal or other closing mechanism.
- Make sure the load is tightly packed with no spaces, or leave enough space between items to allow inspection.
- Make sure the tilt cord is correctly fitted.
- Make a note of the number of the lock or seal on your checklist.

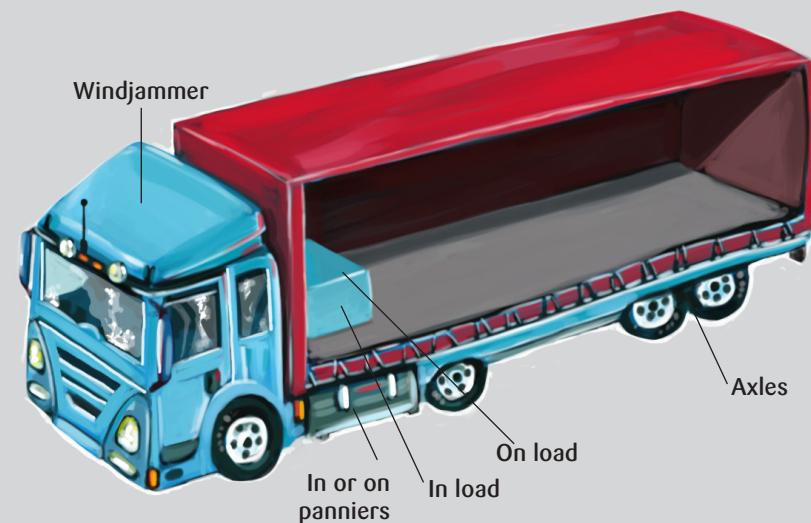
### PARKING

- Park the truck on a public and well-lit place, so that it is visible from a distance.
- Avoid parking near areas planted with trees or bushes.
- Park the truck in a way that doesn't give away that your destination is the United Kingdom or France (on the other side of the street, in another direction..)

### SOCIAL CONTROL

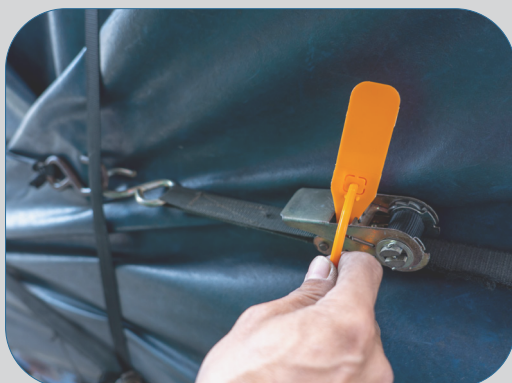
- Park your truck close to another.
- Be alert to suspicious situations or behavior in the area.
- Do not lose sight of your truck and the trucks of your colleagues.
- Warn your colleagues in case of suspicious situations.

### Hiding places



## LOCKING AND CONTROL AT REST STOPS

- Close windows and doors when leaving the truck for a rest stop.
- After every stop carefully check the outside of the truck for damage and repair.
- Look above and under the truck and in other spaces where a person could hide.
- Check **THOROUGHLY** the fabric, roof, tilt cord and locks of the vehicle.
- Compare those with the numbers that were listed on the board documents.
- Ask your colleagues for help in the control of your truck.



## SUSPICIOUS SITUATIONS OR IRRREGULATIONS

- Call the police immediately on **101**.
- Report incidents involving other truckers.
- Don't drive on if you suspect a problem.
- Don't put yourself in harms way.

### HOW CAN YOU REDUCE YOUR CHANCES OF BEING FINED BY THE UK AUTHORITIES ?

- Follow the instructions mentioned above and ensure your vehicle is secure.
- There is a fine of **£2000** for every person found hidden in your vehicle.
- How to reduce this ? **check GOV.UK and search 'Civil Penalty Accreditation Scheme'**.
- Fill out your application, if your haulage company has effective systems to prevent people to enter the UK.



Verantwoordelijke uitgever : Dienst Vreemdelingenzaken, Antwerpsesteenweg 59 B 1000 Brussel

# Don't give people smuggling a chance!



## TIPS for truckers

Deze tekst is een vertaling uit het Nederlands.

More information : [www.febetra.be](http://www.febetra.be)  
Suspicious situations : call 101

